

# Common Maptitude for the Web .NET Controls

## ChooseMapControl

Choose a map:

Lets the user switch between different maps for the same location

## LocateDataControl

Find Airport Code:

Finds map features with a custom Select query and zooms the map to the location found

## LocateControl

Find Locations near Street:  City:  State:  ZIP Code:

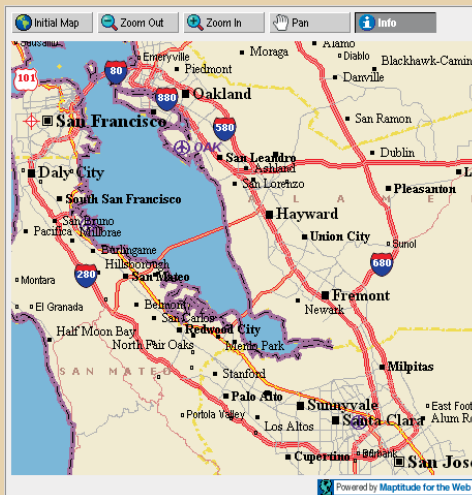
Locates map features near a street address, a city, or a Postal Code

## LayerControl

Layers:  
 Streets and Highways  
 Railroads  
 ZIP Codes

Shows or hides groups of layers in the map image

## MapControl



Map image control with interactive tools, including panning and zooming

## SelectControl

Found 3 Locations near the point you clicked

- 11.06 Miles  
SAN FRANCISCO INTL  
SAN FRANCISCO CA  
[Take Me There!](#)
- 14.46 Miles  
METROPOLITAN OAKLAND INTL  
OAKLAND CA  
[Take Me There!](#)
- 40.69 Miles  
SAN JOSE INTERNATIONAL  
SAN JOSE CA  
[Take Me There!](#)

Selects map features by location or by query and display the attributes in a DataList control

## AnnotationControl

Text:

Draws a bitmap annotation and an optional text label on the map image

## InfoSelectControl

Lets the user click anywhere on the map and uses the SelectByLocation event of SelectControl to return info

## GetMapImageControl

Displays one of the map images created with the *Application-Make Map Images* command

## InfoControl

Nearby Airports:

Airport Code	Name	City	State	Distance
SFO	SAN FRANCISCO INTL	SAN FRANCISCO	CA	11.25
OAK	METROPOLITAN OAKLAND INTL	OAKLAND	CA	14.65
SJC	SAN JOSE INTERNATIONAL	SAN JOSE	CA	40.90

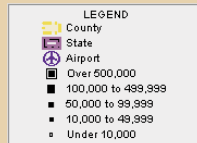
Selects one map feature near the point clicked on the map, and displays the attributes in a DataGrid control

## LoginControl

Login to the mapping server  
 User Name:   
 Password:

Allows users to log in to the web form with a user name and password

## LegendControl



Displays the map legend that corresponds to the current map image

## AdminControl

Allows you to pause and restart the mapping service, for use when updating the data for a live application

### Key:

Controls for what is shown on the map

Controls for finding locations

Controls for administrative functions

Controls for selecting and querying data