

Common TransCAD for the Web .NET Controls

ChooseMapControl

Choose a map:

Lets the user switch between different maps for the same location

LocateDataControl

Find Airport Code:

Finds map features with a custom Select query and zooms the map to the location found

LocateControl

Find Locations near Street: City: State: ZIP Code:

Locates map features near a street address, a city, or a Postal Code

AnnotationControl

Text:

Draws a bitmap annotation and an optional text label on the map image

GetMapImageControl

Displays one of the map images created with the *Application-Make Map Images* command

EditRouteControl

Stop Address: City: State: ZIP Code:

Adds or removes stops to the route computed by RoutingControl

RoutingControl

Path Directions

Origin: [HIGHLAND AVE near ROBESON ST FALL RIVER MA](#)
 Destination: [ALLEN ST & SLOCUM RD NORTH DARTMOUTH MA](#)
 Travel Time: 29.1 Minutes [Display Entire Route](#)

Path between stop 1 and 2

From Stop 1 [HIGHLAND AVE near ROBESON ST FALL RIVER MA](#)
 To Stop 2 [NAUSET ST between ELM ST & HATHAWAY RD NEW BEDFORD MA](#)

Start	South on ROBESON ST	1.2 Miles
Turn Left	East on PRESIDENT AVE	2.0 Miles
Turn Right	South on STATE HWY 24	4.5 Miles
Continue	East on I-195	13.8 Miles
Turn Right	North on STATE HWY 140	14.6 Miles
Turn Left	East on NAUSET ST	15.4 Miles

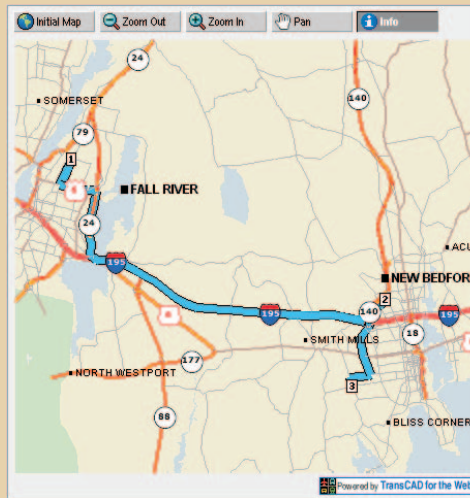
Path between stop 2 and 3

From Stop 2 [NAUSET ST between ELM ST & HATHAWAY RD NEW BEDFORD MA](#)
 To Stop 3 [ALLEN ST & SLOCUM RD NORTH DARTMOUTH MA](#)

Start	West on NAUSET ST	.7 Miles
Turn Right	South on STATE HWY 140	2.6 Miles
Turn Right	West on HAWTHORN ST	3.9 Miles
Turn Left	South on SLOCUM ROAD	4.1 Miles

Computes the shortest route connecting two or more stops by using a TransCAD network

MapControl



Map image control with interactive tools, including panning and zooming

SelectControl

Found 3 Locations near the point you clicked

11.06 Miles	SAN FRANCISCO INTL	SAN FRANCISCO CA
14.46 Miles	METROPOLITAN OAKLAND INTL	OAKLAND CA
40.69 Miles	SAN JOSE INTERNATIONAL	SAN JOSE CA

Selects map features by location or by query and display the attributes in a DataList control

InfoSelectControl

Lets the user click anywhere on the map and uses the SelectByLocation event of SelectControl to return info

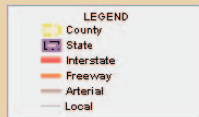
InfoControl

Nearby Airports:

Airport Code	Name	City	State	Distance
SFO	SAN FRANCISCO INTL	SAN FRANCISCO	CA	11.25
OAK	METROPOLITAN OAKLAND INTL	OAKLAND	CA	14.65
SJC	SAN JOSE INTERNATIONAL	SAN JOSE	CA	40.90

Selects one map feature near the point clicked on the map, and displays the attributes in a DataGrid control

LegendControl



Displays the map legend that corresponds to the current map image

LayerControl

Layers:

Streets and Highways
 Railroads
 ZIP Codes

Shows or hides groups of layers in the map image

LoginControl

Allows users to log in to the web form with a user name and password

AdminControl

Allows you to pause and restart the mapping service, for use when updating the data for a live application

Key: Controls for what is shown on the map | Controls for finding routes | Controls for finding locations | Controls for administrative functions | Controls for selecting and querying data