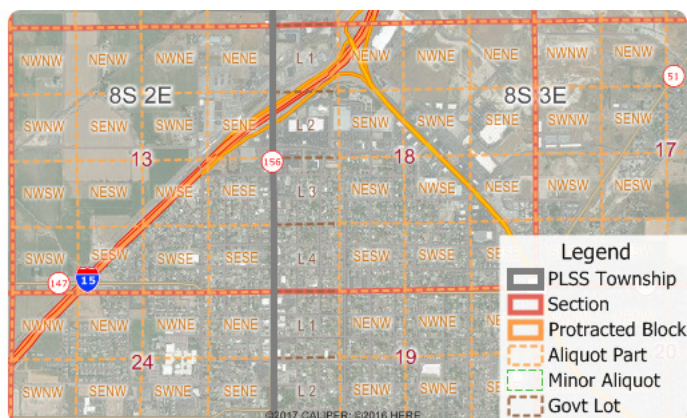


# Public Land Survey System (PLSS) for Maptitude 2017

The Land Ordinance of 1785 established the Public Land Survey System, also known as the Township and Range system. Today the Bureau of Land Management maintains the Survey as a way to accurately categorize large areas of the Continental US. Area layers for the PLSS and for the Texas Survey System (TXSS) are now downloadable for free for Maptitude 2017 users only. Don't have Maptitude 2017? [Purchase or upgrade to Maptitude 2017](#) to use this premium PLSS data.



The PLSS and TXSS are used:

- for administering lease programs by state oil and gas commissions
- for right of access management programs
- for local government parcel mapping
- for researching the ownership of Mineral Rights under a person's property
- for locating oil or gas wells by petroleum geologists

The downloaded layers can be added to any Maptitude 2017 map. The PLSS divides large areas of the USA into townships and sections (First Divisions and Second Divisions). The Texas Land Survey Layer splits the state into tracts, sections, and labors.

Download PLSS & TXSS Layers  
(Mapitude 2017 Required)

Buy/Upgrade Maptitude 2017  
(Required to download PLSS & TXSS Layers)

REQUIREMENTS:	Requires Maptitude 2017 software and a 2017 USA Country Package.
USING THE LAYERS:	The layers are typically installed to your c:\ccdata folder. You can add any of these layers to a map by choosing Map > Layers > Add Layer, browsing to the install folder, typically c:\ccdata, and choosing the layers that you would like to map.
ABOUT THE DOWNLOAD:	The install codes and instructions for downloading are emailed after the shipping confirmation email. Download orders received after 3pm are usually processed the same business day, but may be processed on the next business day, excluding US federal holidays.

## Tips and Tricks for Using the PLSS and TXSS Layers

Our monthly newsletter and website have tips and tricks to help users effectively use the data. We have included some relevant tips below for your reference.

### Downloading the free PLSS layers for Maptitude 2017

The PLSS and TXSS map layers for Maptitude 2017 are accessible as a free download. In this tech tip we describe how to install the layers and add them to a map.

1. Download the data from the [Caliper Store](#). NOTE, you must have Maptitude 2017 in order to download the layers.
2. Once the files are downloaded, click **OK**, and then click the **Install** button. Follow the prompts to install the layers.
3. To add one or more of the layers to a Maptitude map, open the map, choose **Map>Layers**, and click **Add Layer** in the Layers dialog box.
4. Browse for the folder where the downloaded data are located (e.g., c:\ccddata). Within this folder will be two subfolders, PLSS and TXSS. Choose one or more of the data layers from these folders, and click **Open** in the File Open dialog box.
5. Maptitude adds the layer(s) to the map. Close the layers dialog box to see the layers on the map. Note, you may have to zoom in or turn off autoscaling if your map scale is outside of the autoscale settings for the layer(s) you chose. You can turn off autoscaling in the Display Manager by right-clicking on a layer and choosing **Show Layer** or by clicking the red magnifying glass icon next to the layer.

### Adding Map Background Imagery to a Map



When you have added one or more PLSS or TXSS layers to your map as described in the above Tech Tip, you can then add aerial background imagery to add context for those layers. This can be particularly helpful in more remote areas.

Using the Map menu (**Map>Imagery**) you can add photos and topographic images for the location you are looking at. Use the Display Manager to turn the image layers on and off or change their level